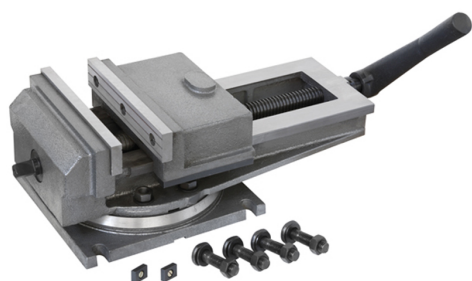


WITH INTERCHANGEABLE JAWS IN HARDENED AND GROUND STEEL.
SLIDING PARTS GROUND. UNCOVERED VINE. WITH CRANK AND FIXING
SCREWS.



Jaws	250 x 45 mm
Opening	320 mm g
Overall sizes	612 x 280 x 186h mm
Base dimensions	290 x 270 mm
Slot distance	245 mm
Slot	18 mm
Net weight	50 kg
Gross weight	54,00 kg
Packaging dimensions	620x300x240 h mm
EAN Code	8012667003067



Cast Iron



Box